

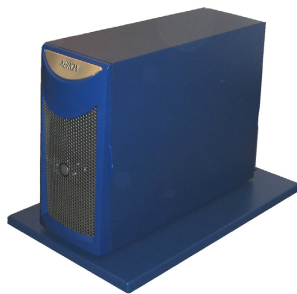
XEROX®

Production Systems Group

Xerox DocuSP Print Server for the Xerox iGen3 Digital Production Press

Customer Expectations Document Appendix

As of October 2006



Copyright 2006 Xerox Corporation

Copyright protection claimed includes all forms and matters of copyrighted material and information now allowed by statutory or judicial law or hereinafter granted, including without limitation, material generated from the software programs that are displayed on the screen such as styles, templates, icons, screen displays, looks, etc.

XEROX®, and all Xerox product names and product numbers mentioned in this publication are trademarks of XEROX CORPORATION. All non-Xerox brands and product names may be trademarks or registered trademarks of the respective companies, and are hereby acknowledged.

Product appearance, build status and/or specifications are subject to change without notice.

This page intentionally left blank



Table of Contents

Table of Contents	3
INTRODUCTION.....	5
HARDWARE / SOFTWARE PLATFORM	5
Licenses	5
Virus Protection	6
Security	6
Surge Protection.....	6
NETWORK SUPPORT	6
Client Services and Job Submission	7
FILE FORMATS.....	7
KEY FEATURES AND CONSIDERATIONS	8
<i>Graphical User Interface.....</i>	8
<i>Remote Operation</i>	8
<i>Adobe Postscript RIP</i>	8
<i>Concurrent Processing.....</i>	8
<i>Job Programming.....</i>	8
<i>Page Level Programming.....</i>	8
<i>Covers / Inserts</i>	8
<i>Stock Programming.....</i>	8
<i>Image Shift</i>	8
<i>Image Rotation</i>	8
<i>Preflight</i>	8
<i>Open Pre-press Interface</i>	9
<i>Imposition</i>	9
<i>Job Management.....</i>	9
<i>Job Sharing</i>	9
<i>Queues / Virtual Printers / Hot Folders.....</i>	9
<i>Demand Reprint</i>	9
<i>Job Storage and Retrieval</i>	9
<i>Job Edit.....</i>	9
<i>Watermark.....</i>	9
<i>Job Interrupt</i>	9
<i>Job Accounting.....</i>	10
<i>Sample Print.....</i>	10
<i>Dynamic Sample</i>	10
<i>Job Preview</i>	10
<i>Job Thumbnails</i>	10
<i>Real-time Progress Display.....</i>	10
<i>setpagedevice</i>	10
<i>Banner Pages.....</i>	10
<i>DFA Interface</i>	10
<i>Security.....</i>	10
<i>Large PDF Support.....</i>	11
<i>Backup and Restore.....</i>	11
<i>Disk Space Monitoring.....</i>	11
<i>Reposition Output.....</i>	11
<i>Section 508.....</i>	11
<i>Disk Overwrite</i>	11
COLOR FEATURES.....	11

ICC Profiles	11
Color Paths.....	12
Emulations.....	12
DocuColor 2000 / 6060 Matching	12
Color Curves.....	12
Screen Selection	12
Multiple Level Programming.....	12
Pantone® Licensed Spot Color Support.....	12
Gray Component Replacement (GCR).....	12
Calibration	12
Calibrate while Printing.....	12
Trapping	13
Color Adjustments	13
Image Quality	13
Image Enhancement	13
Text / Line Quality.....	13
Edge Enhancement.....	13
Text Rendering.....	13
Embedded Profiles	13
Rendering Style.....	13
VARIABLE DATA PRINTING SUPPORT	14
VIPP	14
PPML.....	14
Variable PostScript and PDF.....	14
VDDP Architecture	14
Imposition	14
Background Forms	14
PARALLEL RIP CAPABILITY.....	14
Queue Manager.....	15
Progress Indicators.....	15
Imposition	15
VI Printing.....	15
Administration Pages.....	15
Data Stream Support.....	15
Performance	15



Introduction

The purpose of this document is to help you understand the current features and capabilities of the Xerox DocuSP Color Controller when used with the Xerox iGen3 Digital Production Press. Review of this material is required prior to your signing an order for an iGen3 with DocuSP.

This document addresses high-level expectations. Additional details will be provided in documentation during training.

The Xerox DocuSP controller for the iGen3 is an extension of the DocuSP controller that drives the DocuTech 6180 and similar products. Changes have been made to support the architecture of the press, and to add a variety of color management capabilities, both simple and complex. One controller drives one iGen3 press.

Hardware / Software Platform

DocuSP is based on the latest hardware / software platform available from Sun Microsystems. The hardware configuration may change between versions of this document. Any difference in the delivered product will provide functional equivalence to the performance and feature set described herein.

- CPUs Four 2.6 GHz Dual Core Processors (8 processors total)
- Hard Drives Three High Performance 73 GB SCSI
- Memory 16 x 1 GB
- Ethernet 2 Gigabit Ports built in / 4 optional
- I/O Ports Five USB, PS/2, Serial
- CD/DVD One DVD Drive
- Size 8.5"W x 24"D x 17.5"H / 21.5cmW x 61cmD x 44.5cmH
- Weight 90 lbs. / 41 kg. with dolly
- Power 1350 W - Four power cords
- Voltage 100-240 VAC / 47-63 Hz
- Current (total) 20 / 10 A max @ low / high voltage input
- One XIIM Opt Press Interface
- Three XCDM BSP 15Xr compression / decompression boards
- 17" flat panel display
- USB Keyboard and mouse
- Four XIC cards (on print engine)
- Four 75' IOT I/F Fiber optics cables
- Sun Solaris™ 10
- Optional Gigaswift (copper) network card for an additional private network connection

Licenses

The DocuSP Controller has the following licensable options:

- AppleTalk Gateway
- CID Fonts
- Diagnostics
- Diagnostics with Productivity Tools
- NetWare Gateway
- PCL Decomposer
- PostScript Decomposer

- TIFF Decomposer
- Time and Materials Diagnostics
- Imposition
- Parellel RIP
- PPML
- VIPP*
- Disk Overwrite*
- IPDS*

The Service Technician will activate your selections by supplying the license string, expiration date, and print engine serial number.

* The VIPP, Disk Overwrite, and IPDS features have a fee associated with the licenses.

Virus Protection

To date, viruses in the Unix environment have not been an issue and are not considered a threat to system integrity at this time. Mail has been disabled on the platform as an additional precaution. McAfee for Unix is available if desired.

Security

Xerox understands the importance of maintaining a secure network environment and recommends that customers change from the default passwords upon completion of system installation. We have also instituted the use of security scripts that are run at system installation and close the well-known loopholes in the operating system. Additionally we work closely with

Security profiles can be fully customized via the GUI; at install, the security level is set to "Low".

Surge Protection

Xerox recommends protecting the DocuSP from surges or spikes in electrical power that can damage the server and result in extended downtime. In areas that tend to experience brownouts or blackouts with more frequency, installation of an Uninterruptible Power Supply (UPS) is suggested. This protection is the responsibility of the customer.

Network Support

The DocuSP Controller supports the following protocols and frame types.

<i>DocuSP Controller</i>			
Protocol Stack	Printing Services	Supported Frame Types	Client Platforms
TCP/IP	LPD	Ethernet_II, 802.5 (Token Ring)	Windows 9x/NT/2000
			Solaris 2.4+
			Macintosh
AppleTalk	PAP via DocuSP	Ethernet_SNAP	Macintosh
	AppleTalk Gateway		
Novell IPX/SPX	QServer via DocuSP	Ethernet_II, 802.2, 802.3	Windows 95/98/NT/2000
	NetWare Gateway		

Client Services and Job Submission

This table summarizes the job submission services available for DocuSP clients. Xerox Common Custom Drivers bring most DocuSP features out to the client desktop and provide coherence with other Xerox products. Client hardware requirements are driven by the operating system requirement.

DocuSP - Common Client Custom PostScript Drivers			
Protocols	Features	PDLs	Client OS
TCP/IP,	Most all of the features available on DocuSP GUI	PostScript 2 & 3	Mac v. 8, 9 (Adobe via customized plugin)
IPX/SPX,			Mac OS X-Classic (Adobe via customized plugin)
AppleTalk			Windows 9x, NT, 2K, XP
DocuSP - PostScript Drivers with Common Client PPD's			
Protocols	Features	PDLs	Client OS
TCP/IP,	Many of the features available on DocuSP GUI	PostScript 2 & 3	Mac v. 8, 9 (Adobe only)
IPX/SPX,			Mac OS X - Classic & Native (Adobe Only)
AppleTalk			Windows 9x/Me (Adobe and Microsoft)
			Windows NT (Adobe and Microsoft)
			Windows 2K (Microsoft only)
			Windows XP (Adobe and Microsoft)
DocuSP - Common Client HTML (Web) Document Submission			
Protocols	Features	PDLs	Client OS
TCP/IP,	Most all of the features for job submission, View queues, job lists, and printer status	PDF, PostScript,	Solaris 2.6 and greater
HTTP		TIFF, HP/PCL,	Windows 9x (Internet Explorer 5.x, 6.x)
		ASCII	Windows NT 4.0 (Internet Explorer 5.x, 6.x)
			Windows 2K (Internet Explorer 5.x, 6.x)
			Windows XP (Internet Explorer 5.x, 6.x)

The Web submission client is an HTTP-based application that supports many printer-specific attributes for any web-enabled client platform. The supported browsers are Microsoft Internet Explorer 5.x and 6.0. FreeFlow Print Manager also includes document submission tools that support most of the features available in DocuSP job programming.

Availability of SAMBA software with Solaris 10 enables general file storage and retrieval on DocuSP from a Windows or Macintosh client.

File Formats

The following file formats are supported:

- PostScript level 1, 2, or 3 per the PostScript language Reference Manual Supplement v3016.
- Adobe Portable Document Format version up to 1.5 (Acrobat 6). Adobe job ticketing is not supported. Note that there is a 2 Gigabyte limit on incoming PDF files. To process, jobs must be broken up into segments <2 Gb. The Parallel RIP configuration does not have this constraint.
- TIFF v6.0, native and multi-page. TIFF-IT is not supported.
- PCL5c, PCL5e, and PCL6XL class 2.1 (HP LaserJet 4500 emulation). PCL jobs should be tested prior to making system productivity and capability commitments. PCL does not support the full range of DocuSP features, in particular, page exception programming, stock management, and finishing.
- ASCII
- Jobs that have been RIPped for iGen3 (Fast Reprint Format – FRF)
- Intelligent Print Data Stream (IPDS), license required
- Xerox Variable-data Intelligent PostScript Printware (VIPP); license required
- Personalized Print Markup Language (PPML) Version 2.1 Graphic Arts subset

- Jobs submitted from FreeFlow Make Ready or FreeFlow Print Manager
- IPDS – See separate IPDS Customer Expectations Document

Key Features and Considerations

The following features are available and operate per specification, unless otherwise noted in the customer documentation. Your operators will be trained in the deployment and use of this feature set.

Item	Xerox DocuSP	Comments
Graphical User Interface	Essentially the same as the GUI for the DocuColor ; high level of commonality with DocuTech products.	
Remote Operation	<ul style="list-style-type: none"> • DocuSP Remote Workflow (DRW) • Operate DocuSP from a remote workstation. • Displays the complete user interface of the remote printer/press. • Provides real time press status. 	<ul style="list-style-type: none"> • Can run multiple color or monochrome systems from one central site, however only one user interface can be displayed at a time. • Client memory may limit the number of remote GUIs; 512 Mb minimum of memory required.
Adobe Postscript RIP	<ul style="list-style-type: none"> • Adobe v 3016. 	Supports Acrobat 7, but not the unique Acrobat 7 feature set
Concurrent Processing	<ul style="list-style-type: none"> • Streaming Mode • Receive, RIP, and print one job or different jobs concurrently without spooling. • Enables long job support. • RIP multiple pages or jobs simultaneously with Parallel RIP 	<ul style="list-style-type: none"> • Streamed jobs cannot be interrupted • All jobs begin printing while still being RIPped when programmed 1-n.
Job Programming	<ul style="list-style-type: none"> • Select parameters from tabs by job at GUI or via queue settings or set using XPPS from clients • Extensive programming via PostScript 	<ul style="list-style-type: none"> • Select from tabs Properties, Stock, Output, Color, Exception Pages, Inserts, and Covers.
Page Level Programming	<ul style="list-style-type: none"> • Exception Pages • Selectively apply a variety of parameters at the page level in addition to queue and job programming. • Add tabs and other unique pages to a job • Includes ability to vary trapping, overprint, image shift, plex, print as grayscale, edge enhancement, and stock selections on a page basis. 	<ul style="list-style-type: none"> • Enables mixed-media jobs. • Independent side 1/side 2 image shift. • Mix single- and double-sided pages. • Each page will be rendered per the profile associated with the media selected for that page • Anti-aliasing cannot be applied on a page or object basis.
Covers / Inserts	<ul style="list-style-type: none"> • Program via Insert / Covers tabs • Insert slip sheets via Output tab 	<ul style="list-style-type: none"> • Can be imaged or not
Stock Programming	Linked to Stock Library	
Image Shift	Allows users to specify the x, y coordinates for each page	Can be applied on a page basis
Image Rotation	Rotate all images 180°	Useful for in line finishing
Preflight	Not available	Conflict checking and resource based scheduling help prevent faulted jobs downstream

Item	Xerox DocuSP	Comments
Open Pre-press Interface	<ul style="list-style-type: none"> • Supports Specifications 1.3 (22 September 1993) and 2.0 (draft, 28 August 1995) • Replace low resolution images with high resolution images at the server to save RIP time and disk space • Supports TIF and EPS formats 	<ul style="list-style-type: none"> • Image substitution must have access to the high resolution images on local disk or via NFS • Informational OPI messages will not be displayed
Imposition	<ul style="list-style-type: none"> • Imposition is performed post-RIP. • Pre-set imposition templates available including 2-Up (8 versions), 4-Up (6 versions), 9-up, 2-up flip right, 6-up, 1-up, Custom Multiple-up, Zip-Sort Cut and Stack, Postcard, Perfect Signature, and Saddle Signature for PostScript and PDF files. • Gutter creep, image placement, margins, and crop marks are automatically applied or can be specified for all templates. • Original size, output paper size, and scale attributes can be specified or changed. • Custom templates can be saved 	<ul style="list-style-type: none"> • Crop marks are not adjustable; they print at the edges of the images only. Crop marks cannot be placed inside the bleed boundaries; creep and crop marks apply to the entire job. • Page exceptions can only be used with image repeat templates; otherwise they can be added to imposed FRF files in reprint manager. • Jobs using Kanji fonts cannot be imposed.
Job Management	<ul style="list-style-type: none"> • Submit, hold, release, promote, cancel, delete jobs as required • At-a-glance status display for all jobs 	
Job Sharing	<ul style="list-style-type: none"> • Job Forwarding • Ability to send PDLs to another DocuSP printer with or without the Job Ticket via pull down list of destination printers 	Can send completed jobs or active jobs
Queues / Virtual Printers / Hot Folders	<ul style="list-style-type: none"> • Multiple independent queues • Apply programming parameters via queue for workflow automation • Up to 250 queues allowed • Hot Folder support for job submission 	<ul style="list-style-type: none"> • 128 queues with AppleTalk • Override with Job Programming at the GUI
Demand Reprint	<ul style="list-style-type: none"> • RIP and save to Fast Reprint Format for Print On Demand at rated speed and proof now, print later operations 	<ul style="list-style-type: none"> • FRF locks most color parameters; TRCs can be applied and non-color parameters can be changed.
Job Storage and Retrieval	<ul style="list-style-type: none"> • Reprint Manager • Contains RIPped jobs (FRF) and PDLs • Import from removable media or network 	
Job Edit	<ul style="list-style-type: none"> • Copy, delete, and add pages to a job in FRF format 	
Watermark	Available with the new Printer Driver Suite	
Job Interrupt	<ul style="list-style-type: none"> • Print Now • Ability to interrupt a job in print, RIP and print a second job, and resume the first one automatically 	<ul style="list-style-type: none"> • Cannot interrupt an interrupt job. • Interrupted job pauses before second job RIP is complete – press may cycle down.

Item	Xerox DocuSP	Comments
Job Accounting	<ul style="list-style-type: none"> Captures job related characteristics for display and/or export 	Data captured includes Job id, Container id, Host job number, Sender name, Recipient, Account, Disposition Job status, Virtual printer, Printer type, Job submission date, Input file size, PDL format, Start & stop RIP time, Elapsed RIP time, Number pages RIPped, Total pages trapped, Print start and complete, Copies printed, Finishing applied, Black page count, Color page count, Anti-alias page count, Stocks used (weight, size, etc for each)
Sample Print	<ul style="list-style-type: none"> Request an additional set every "n" sets to be printed and sent to the press top tray 	
Dynamic Sample	<ul style="list-style-type: none"> Dynamic Sample is the ability to select Sample Current Job (Printers > Sample Current Job) while the printer is cycled up and printing to get an extra copy of one of the currently printing pages sent to the top tray. 	Dynamic Sample is enabled, but may take more time than expected. See customer documentation for current status. Also specific page to be sampled can not be selected.
Job Preview	<ul style="list-style-type: none"> Available for PostScript and PDF jobs 72 dpi image is displayed in RGB regardless of source color space. Good for checking positioning and fonts. Preview Tool for TRC color changes. 	<ul style="list-style-type: none"> Not to be used for precise color management. Pre-RIPped image that does not comprehend queue overrides, job ticket information, etc.
Job Thumbnails	<ul style="list-style-type: none"> Available for post-RIP jobs in Fast Reprint Format (FRF). 	DRI must be enabled when the job is processed.
Real-time Progress Display	<ul style="list-style-type: none"> Displays jobs RIPping, % of sets printed, and % of pages printed. 	
setpagedevice	<ul style="list-style-type: none"> Dynamic media pulls Recognizes this PostScript command for any stock-related parameter to enable mixed stock jobs 	
Banner Pages	<ul style="list-style-type: none"> Banner Pages can be enabled / disabled on a queue basis or by job Can add messages to the Banner Page in Job Programming Attribute Report provides log of job settings 	<ul style="list-style-type: none"> Admin Pages includes Banner Pages and Error Pages Error Pages are enabled / disabled on a queue basis only
DFA Interface	Supports all iGen3 inline feeding and finishing devices	<ul style="list-style-type: none"> Invoke by selecting the correct Device Profile under Finishing, and Bypass Transport and Finisher in Job or Queue Manager Conflict checking enabled
	<ul style="list-style-type: none"> 	
Security	<ul style="list-style-type: none"> User password control Four system-supplied profiles to control access to device and OS services plus user-defined profiles Client to controller encryption available 	

Item	Xerox DocuSP	Comments
Large PDF Support	<ul style="list-style-type: none"> Adobe interpreter supports PDF files up to 2 Gbytes 	<ul style="list-style-type: none"> Some PDFs may generate intermediate PostScript files > 2Gbytes. The DocuSP PDF optimization feature manages this in most cases by recognizing repeatedly referenced objects to keep the size down. If necessary, PDFs can be chunked by invoking a command line utility named setpdfrange to avoid the issue. The setpdfrange script is stored in the /opt/XRXnps/bin directory. For customers using DocuSP Imposition, the setlegacyimpose script enables caching through the imposition path. This also helps reduce the resulting PostScript file that is RIPped after it is imposed to something less than 2 Gbytes for most jobs. PDF files which are themselves > 2 Gbytes must be broken up for submission
Backup and Restore	<ul style="list-style-type: none"> Configuration Backup enables back up of selected configuration settings Selections include Stock Database/Trays, Stacker/ Finisher Settings, Switches/Preferences, ICC Profiles/TRCs, Image Quality, Customer Directories 	Use of System Backup and Restore is not recommended as it may produce unexpected results
Disk Space Monitoring	<ul style="list-style-type: none"> Disk usage indicators enable monitoring of disk space "Clean Files" to remove large files left by system crashes 	
Reposition Output	<ul style="list-style-type: none"> Enables pause and repositioning (space back or forward) of jobs during printing 	Target workflow is long, unfinished, 1-N jobs
Section 508	<ul style="list-style-type: none"> Compliant with United States Government Rehabilitation Act, Section 508, 1194.2 providing keyboard access to all DocuSP functionality 	
Disk Overwrite	<ul style="list-style-type: none"> Optional kit Enables overwriting the user data drive partition with a series of 1s and 0s for security purposes 	

Color Features

The following color / image quality features are available.

Item	Xerox DocuSP	Comments
ICC Profiles	<ul style="list-style-type: none"> Expert color workflow. Import source profiles for emulations such as IRIS. Profile specialty stocks 	<ul style="list-style-type: none"> RIP time may be increased.

Item	Xerox DocuSP	Comments
Color Paths	<ul style="list-style-type: none"> • CMYK, RGB, CIE L*a*b, Spot Colors • Dynamic Look Up Tables (LUTs) - Automatic "on-the-fly" Look-Up-Tables removes ICC path conversion path 	Source space can be selected independently for images and text/graphics of a single document.
Emulations	<ul style="list-style-type: none"> • SWOP • SWOP Plus • Fogra Gloss, Fogra Matte, Fogra Uncoated • Japan Color 	SWOP Plus is the default CMYK setting; it provides a SWOP-like response that maximizes the system's gamut.
DocuColor 2000 / 6060 Matching	<ul style="list-style-type: none"> • Emulation mode provided. 	Precise matching of iGen3 output to that of the DocuColor 2045, 2060, and 6060 may not be possible due to xerographic and gamut differences between the systems.
Color Curves	<ul style="list-style-type: none"> • Tone Reproduction Curves (TRC) • Select the default or user-defined TRC to perform last minute color adjustments on one or several separations. • Select Expert Color to create, edit, and save user TRCs. • TRC can be applied at the page or job level. 	No RIP time impact – adjustments are applied post-RIP.
Screen Selection	<ul style="list-style-type: none"> • 150: Most uniform tints. • 175: Optimal balance for most applications. • 200: Cleanest edges on graphic tints, best sharpness in pictorials. • Stochastic: Minimized subject moiré. • Default screen is 175 lpi. 	<ul style="list-style-type: none"> • 150: less detail, more visible dot structure. • 175: Balanced response. • 200: More susceptible to non-uniformity in flat tints. • Stochastic: May appear grainy in large uniform areas.
Multiple Level Programming	<ul style="list-style-type: none"> • Select and apply color rendering by queue, job, page or object depending on job requirements 	
Pantone® Licensed Spot Color Support	<ul style="list-style-type: none"> • Imaging of coated and uncoated spot colors is supported for PDF and PostScript files • Spot Color Editor enables tuning color recipes and adding spot colors. • Default is on; Pantone processing can be disabled for a better match when a document has a mix of spot and CMYK calls 	<ul style="list-style-type: none"> • When spot colors are defined in a file and a TRC is applied, the TRC will be applied to the spot color; other color adjustments will not be applied • When spot colors are defined in a file and press color emulation or grayscale is selected, the spot color will not be emulated.
Gray Component Replacement (GCR)	<ul style="list-style-type: none"> • Replaces a percentage of the gray component with black. • Select default, light, medium, or heavy for each rendering intent depending on content. 	Default (System Specified) is between medium and heavy.
Calibration	<ul style="list-style-type: none"> • Patented gray scale calibration maintains press neutral state. • X-Rite DTP-41 spectrophotometer supplied with the system. • Calibration once per shift per halftone to a standard paper is recommended. 	<ul style="list-style-type: none"> • Other spectrophotometers will not operate with the system. • Refer to the X-Rite documentation for spectrophotometer instructions. • X-Rite should only be used with this iGen3 system.
Calibrate while Printing	<ul style="list-style-type: none"> • Calibrate printer during printing • Apply calibration to the job in progress or the next printed job 	

Item	Xerox DocuSP	Comments
Trapping	<ul style="list-style-type: none"> Trapping is recommended with the iGen3 due to the nature by which the edges of objects are developed with the dry ink process. Options for height, width, and image/graphic trapping 	Increases processing time – use by page exception if possible.
Color Adjustments	Easy-to-use slider bars adjust for <ul style="list-style-type: none"> Lightness Contrast Saturation Color Cast 	<ul style="list-style-type: none"> Black is not preserved. Adjustments not applied to Grayscale and Pantone inputs. Increases processing time
Image Quality	<ul style="list-style-type: none"> Selectable Interpolation / Image Resample Select Smart Filter to reduce anti-aliasing effects in images/pictorials Especially effective for low-resolution inputs 	Increases processing time – use by page exception if possible
Image Enhancement	<ul style="list-style-type: none"> Automatic enhancement of RGB images 	<ul style="list-style-type: none"> Adjusts for exposure, contract, color, sharpness, and shadow detail.
Text / Line Quality	<ul style="list-style-type: none"> Anti-aliasing Select for improved text and line art rendering Select high (on) or normal (off) 	<ul style="list-style-type: none"> Must be selected via job or queue programming; cannot be applied per page Selecting high increases processing time.
Edge Enhancement	<ul style="list-style-type: none"> Provides cleaner, crisper edges on tinted objects. Default is on; can be set on or off at the page, job, or queue level 	<ul style="list-style-type: none"> Edge Enhancement is optimized for the 175 halftone
Text Rendering	<ul style="list-style-type: none"> Black text quality is excellent for sizes as low as 4 point. Color text and text reversed out of tints will hold good edge quality down to 6 point. 	<ul style="list-style-type: none"> Maintaining the color component at 75% or more, or selecting the 200-halftone screen and defining at least one separation to be near saturation or to 100% will improve the appearance. Choosing the yellow separation will show little improvement due to the lightness of the color.
Embedded Profiles	<ul style="list-style-type: none"> Invoke the ICC path when honored Default is not to honor embedded profile; set at queue to invoke 	
Rendering Style	<ul style="list-style-type: none"> Absolute Relative Colorimetric Perceptual Saturation Pure 	<ul style="list-style-type: none"> Separate rendering intents can be applied to the images, text, and graphics of a single document. Defaults (system specified) are Relative Colorimetric for images, Saturation for graphics, and Pure for text.

Variable Data Printing Support

See independent Variable Printing Customer Expectations documents for additional information.

Item	Xerox DocuSP	Comments
VIPP	<ul style="list-style-type: none"> Variable-data Intelligent PostScript Printware VIPP Project Manager for resource management Direct VPC submission supported Licensed, chargeable. 	VIPP 5.1 demo delivered with the system; max 200 record tryout.
PPML	Personalized Print Markup Language Version 2.1 Graphic Arts subset including objects in PostScript, EPS, PDF, TIFF, and JPEG Licensed.	Complete compatibility with the specific PPML being emitted cannot be assured due to the developing status of this format. Testing is recommended prior to making a production commitment
Variable PostScript and PDF	Supported.	
VDDP Architecture	<ul style="list-style-type: none"> RIPs and caches objects, then re-uses without re-RIPping to improve VI performance. Implemented in hardware to accelerate performance; applied for all variable data printing. 	
Imposition	VI document imposition must be done at the VI authoring application.	
Background Forms	<ul style="list-style-type: none"> Allows black variable data to be merged with a color background form. Background forms accepted in PostScript, PDF, PCL, and TIFF. 	

Parallel RIP Capability

The parallel RIP configuration of DocuSP (license now included with the DocuSP Print Server) provides the ultimate in performance for long, complex jobs or multiple smaller jobs by enabling a concurrent RIP process. It is ideal for long jobs with many non-repeating scanned images and/or digital photographs. The system is fully populated with 8 CPUs to take advantage of the parallel RIP capability. All features of standard DocuSP are included. VIPP is bundled into this configuration; however, Parallel RIP may not improve variable data printing – this is accomplished through caching RIPPed objects. Full use of VIPP requires a VIPP license on the DocuSP.

DocuSP Parallel RIP architecture enables optimum use of multiple CPU's in a system by parsing sections of a large job out to each CPU for concurrent processing and then recombining the sections to send to the press. This is done automatically simply by properly configuring a queue and submitting the job to that queue. The system will also simultaneously RIP multiple small jobs.

A page independent format is required for Parallel RIP to operate. These include PDF and DSC-compliant PostScript (follows Adobe Document Structuring Convention). Quark, PageMaker, and MAC mainline applications tend to generate "good" PostScript.

Parallel RIP is recommended for the following workflows and customer requirements:

- Tend to use trapping and / or anti-aliasing to improve image quality – these are CPU intensive processes that increase RIP time.
- Run long jobs with low run lengths where RIP time may not keep up with the press.
- Run many short run length, relatively complex jobs, to avoid frequent cycle up / cycle down.

- Run longer jobs and print counts and desire faster proofing and first print out time.
- Have had RIP performance issues with another product.
- Run a variety of jobs and want best RIP performance over all.

Item	Xerox DocuSP	Comments
Queue Manager	<ul style="list-style-type: none"> • Enable Parallel RIP in queue properties. • 	
Progress Indicators	Display will be erratic due to RIP concurrency.	
Imposition	Document imposition is recommended to be done at the authoring application.	
VI Printing	<ul style="list-style-type: none"> • Parallel RIP does not use the caching architecture; performance of VI jobs may not improve with Parallel RIP 	
Administration Pages	Not supported on a Parallel RIP queue.	
Data Stream Support	Must be PDF or Document Structuring Convention (DSC)-compliant.	
Performance	At least 50% faster than with standard DocuSP and up to 8 times as fast depending on the job.	